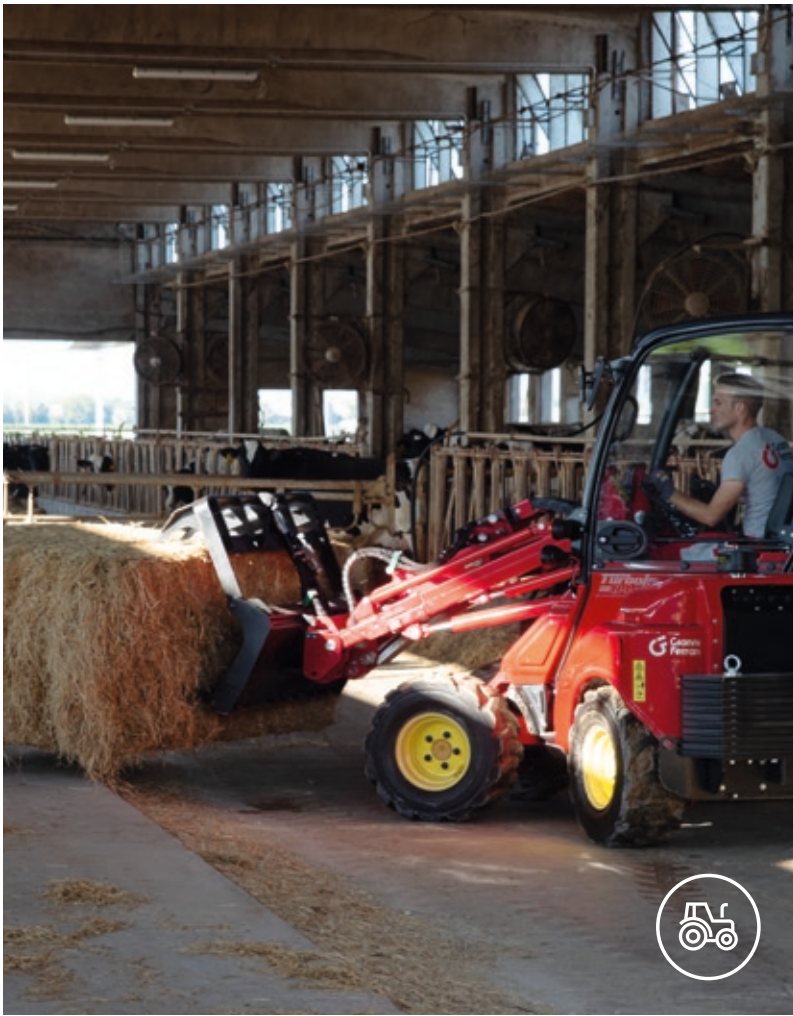




## *Turboloader*











# *Turboloader*

## Versatile Maneuverable Compact

**Turboloader** is a versatile machine, ideal for use in material handling in agriculture, construction and in maintenance of roads and green spaces for both public and private use.



Agriculture



Building



Gardening



Cleaning



WATCH THE VIDEOS

## THE RANGE

The engines available for Turboloader are a **3-cylinder 26 HP 1300 cc** (M series) and a **4-cylinder 26 HP 1500 cc**

(H series). The long wheelbase of the H series provides the machines with exceptional stability.

**M** SERIES



**Lifting:** 700 Kg



**Pushing force:** 9300 N



**Speed:** 9.5 km/h



**Power:** 26 HP

This exclusive configuration allows an **increase of over 25%** in lifting capacity

compared to the M range, while maintaining the **same very compact dimensions and manoeuvrability.**



**H** SERIES



Lifting: 900 Kg



Pushing force: 10.600 N



Speed: 8-16 km/h



Power: 26 HP







## CHASSIS

The articulated chassis allows a **very tight turning radius**, which makes Turboloader easy to manoeuvre even in confined spaces and enclosed areas. In addition to the **agility and ease of manoeuvring** provided by the

centrality of the articulation, this machine offers the possibility of manoeuvring the machine **over delicate surfaces** thanks to the hydraulic traction release. These features allow Turboloader to handle a variety of work requirements in different contexts.



## DRIVER'S POSITION

The driver's station offers an **excellent field of vision** and improves control of the equipment for safety and ease of use. The control joystick and console are integral with the seat and adjustable for maximum ergonomics during use. The **joystick is electro-hydraulic** and proportional, smooth and accurate to operate. The side-mounted instrument dashboard and the arrangement of the lifting boom cylinders

contribute to an unobstructed view of the tool. The seat is equipped with adjustable lumbar support, headrest, suspension and backrest and is also available in a heated version upon request. **Cruise control and the DEC™** (Dynamic Engine Control) device, which manages the engine speed as in the automotive industry, are standard on all models.





## CAB

Turboloader can be optionally equipped with a cab in place of the ROPS. Standard equipment includes: **heating** with five air vents, tempered and type-approved **glass windows**, **two pairs of work lights**, **road traffic kit**, **12V electrical**

**outlet, and stereo speakers with connection for MP3 player.** The external heating unit does not affect the overall height of the machine, as it is located at the rear of the cab. **Air conditioning available upon request.**



## TELESCOPIC BOOM

Turboloader is equipped with a telescopic boom that allows a **lifting height of more than three metres.**

With the **standard hydraulic parallelogram**, load handling is easier and safer. When the floating boom position is selected, the equipment smoothly moves over uneven surfaces. **Flat-face type hydraulic connections** are provided for attachments on the telescopic boom. Ideal for use in dusty

environments, **these couplings prevent oil leaks and air pockets in the circuit** during connection and disconnection.

A pair of **hydraulic jacks** is located on the tilting plate for hitching and unhitching equipment, which is conveniently carried out from **the driver's position with the push of a button.** An audible indicator reminds the operator to complete the coupling procedure.





## ENGINE

Turbocharger is equipped with **low-emission engines** that fully comply with current anti-pollution directives. The radiator with large **anti-clogging** fin ensures high heat exchange even under severe conditions,

which benefits the longevity of the engine and hydraulic components. On the H models, a **practical door** provides easy access to the engine compartment to facilitate checks and maintenance.



## TRANSMISSION

The permanent **4-wheel hydrostatic drive** is built with robust and reliable components. A servo-driven variable displacement hydraulic

pump connected directly to the engine drives the hydraulic motors on the four wheels.



The **H440-2S** model is equipped with **4 dual-speed engines** to ensure maximum grip in slow drive and high transfer rates in fast drive. Turboloader is equipped as standard with a device that helps you get out of poor grip

conditions. For more demanding situations, **a hydraulic flow divider that replicates the operation** of a mechanical differential lock is available as an option.

 Gianni  
Ferrari





## SAFETY

All models in the Turboloader range, with and without cab, are equipped with a **FOPS protection structure** to shield the operator from falling objects. Also standard is the **anti-spill device** that warns the operator if the

rear axle is too light, blocking the telescopic boom extension. An **anti-spill system** is also present, preventing the load from accidentally falling towards the operator.



## HYDRAULIC CIRCUIT

**Two tandem pumps** control the hydraulic circuit and supply the distributor responsible for the movements of the telescopic boom and the quick couplings located on the boom itself, which operate all equipment for which hydraulic connection is required. The two larger couplings control the hydraulic power take-off for equipment such as a hedgecutter

or trencher and a reach arm.

**An electric device sums the oil from the two pumps for a more powerful PTO.**

The two smaller power take-offs are used for equipment with hydraulic cylinders such as multi-purpose buckets, snow blades, and grabbing tools.





**1 Utility bucket**

|                            |                     |                     |
|----------------------------|---------------------|---------------------|
| <b>Width</b>               | 115 cm              | 135 cm              |
| <b>Capacity (ISO 7546)</b> | 0,23 m <sup>3</sup> | 0,27 m <sup>3</sup> |
| <b>Weight</b>              | 78 Kg               | 85 Kg               |
| <b>Toothed profile</b>     | optional            | optional            |
| <b>Teeth</b>               | 7                   | 8                   |

**2 Multi-purpose 4-in-1 bucket**

|                            |                     |                     |
|----------------------------|---------------------|---------------------|
| <b>Width</b>               | 115 cm              | 135 cm              |
| <b>Capacity (ISO 7546)</b> | 0,26 m <sup>3</sup> | 0,31 m <sup>3</sup> |
| <b>Weight</b>              | 152 Kg              | 164 Kg              |
| <b>Toothed profile</b>     | optional            | optional            |
| <b>Teeth</b>               | 7                   | 8                   |

**3 Mixing bucket**

|                            |         |        |         |        |
|----------------------------|---------|--------|---------|--------|
| <b>Capacity</b>            | 150 lt  | 200 lt |         |        |
| <b>Discharge</b>           | Central | Side   | Central | Side   |
| <b>Width</b>               | 126 cm  | 128 cm | 126 cm  | 149 cm |
| <b>Weight</b>              | 270 Kg  | 290 Kg | 270 Kg  | 315 Kg |
| <b>Weight at full load</b> | 630 Kg  | 750 Kg | 650 Kg  | 795 Kg |

**4 High tip bucket**

|                              |                     |                     |
|------------------------------|---------------------|---------------------|
| <b>Width</b>                 | 115 cm              | 135 cm              |
| <b>Capacity (ISO 7546)</b>   | 0,41 m <sup>3</sup> | 0,48 m <sup>3</sup> |
| <b>Weight</b>                | 161 Kg              | 170 Kg              |
| <b>Max. discharge height</b> | 332                 | 332                 |

**5 Light material bucket**

|                            |                     |
|----------------------------|---------------------|
| <b>Width</b>               | 150 cm              |
| <b>Capacity (ISO 7546)</b> | 0,69 m <sup>3</sup> |
| <b>Weight</b>              | 122 Kg              |

**6 Pallet fork**

|                              |         |         |
|------------------------------|---------|---------|
| <b>Length</b>                | 80 cm   | 115 cm  |
| <b>Fork carriage - Class</b> | FEM 2A  | FEM 2A  |
| <b>Load capacity</b>         | 1000 Kg | 1200 Kg |
| <b>Weight</b>                | 100 Kg  | 125 Kg  |

**7 Pallet fork with Extra-Lift**

Reaches up to 30 cm higher

|                              |         |
|------------------------------|---------|
| <b>Elevation</b>             | 30 cm   |
| <b>Fork length</b>           | 115 cm  |
| <b>Fork carriage - Class</b> | FEM 2A  |
| <b>Load capacity</b>         | 1200 Kg |
| <b>Weight</b>                | 200 Kg  |

**8 Industrial type grapple fork**

|                            |        |        |
|----------------------------|--------|--------|
| <b>Width</b>               | 110 cm | 130 cm |
| <b>Tine length</b>         | 57 cm  | 57 cm  |
| <b>Tines (replaceable)</b> | 7      | 9      |
| <b>Weight</b>              | 149 Kg | 157 Kg |

### 9 Manure fork

|             |        |
|-------------|--------|
| Width       | 125 cm |
| Tine length | 52 cm  |
| Tines       | 8      |
| Weight      | 73 Kg  |

### 10 Bale fork

Foldable tines for road transport

|                 |        |
|-----------------|--------|
| Tines wheelbase | 85 cm  |
| Tine length     | 140 cm |
| Weight          | 95 Kg  |

### 11 Snow blade

Choice of rubber or steel scraper

|              |                          |
|--------------|--------------------------|
| Width        | 175 cm                   |
| Angle        | hydraulic $\pm 30^\circ$ |
| Trip springs | 4                        |

### 12 Salt spreader

|                         |              |
|-------------------------|--------------|
| Capacity                | 110 – 170 lt |
| Spreading width         | 0,8 ÷ 6 m    |
| Electrical power supply | 12 V         |

### 13 Grabbing tool

|                     |        |
|---------------------|--------|
| Maximum jaw opening | 65 cm  |
| Jaw length          | 56 cm  |
| Total length        | 76 cm  |
| Weight              | 102 Kg |

### 14 Roller-compactor

Can be filled with water for 100 kg additional weight

|                 |        |
|-----------------|--------|
| Working width   | 130 cm |
| Roller diameter | 35 cm  |
| Weight          | 225 Kg |

### 15 Leveller

|       |        |
|-------|--------|
| Width | 150 cm |
|-------|--------|

### 16 Auger

Choice of ground or rock tines

|                       |              |
|-----------------------|--------------|
| Hexagonal drive shaft | CH 50        |
| Tine diameter         | 100 ÷ 450 mm |
| Tine length           | 100 cm       |
| Extensions            | optional     |









**17 Trencher**

|                    |              |
|--------------------|--------------|
| Max. digging depth | 100 cm       |
| Digging width      | 15 cm        |
| Trench cleaner     | standard     |
| Teeth              | "Shark" type |
| Refill blades      | standard     |

**18 Rotary tiller**

|                    |        |
|--------------------|--------|
| Working width      | 130 cm |
| Max. working depth | 25 cm  |
| Number of hoes     | 24     |

**19 Stone burier**

|                    |        |
|--------------------|--------|
| Working width      | 125 cm |
| Max. working depth | 15 cm  |
| Number of hoes     | 24     |
| Roller width       | 145 cm |

**20 Front hoe excavator**

|                             |                      |
|-----------------------------|----------------------|
| Max. digging depth          | 2,3 m                |
| Swing arc                   | 170°                 |
| Bucket width                | 40 cm                |
| Bucket capacity (ISO 7451)  | 0,036 m <sup>3</sup> |
| Breakout force at the tooth | 2.200 Kg             |
| Stabiliser width            | 130 cm               |
| Stabiliser bars             | hydraulic            |
| Side shift                  | hydraulic locking    |

**21 Swing dipper arm**

|                             |                      |
|-----------------------------|----------------------|
| Max. digging depth          | 1,5 m                |
| Swing arc                   | 170°                 |
| Bucket width                | 30 cm                |
| Bucket capacity (ISO 7451)  | 0,025 m <sup>3</sup> |
| Breakout force at the tooth | 2.200 Kg             |

**22 Flail mower**

|                           |                         |                          |
|---------------------------|-------------------------|--------------------------|
| Cutting width             | 120 cm                  | 150 cm                   |
| Rotor                     | 56 Blades<br>(28 Pairs) | 100 Blades<br>(50 Pairs) |
| Cutting height adjustment | 2 ÷ 9 cm                | 2 ÷ 9 cm                 |

**23 Flail mower with collection**

|                           |                       |
|---------------------------|-----------------------|
| Cutting width             | 120 cm                |
| Rotor - spatula blades    | 40 coltelli a spatola |
| Cutting height adjustment | 2 ÷ 9 cm              |
| Collection capacity       | 700 lt                |

**24 Mower deck 165 Inline**

|  |                                 |
|--|---------------------------------|
| Features                                 | 4 discs with retractable blades |
| Working width                            | 165 cm                          |
| Overall dimensions (Length/Width/Height) | 105/165/30 cm                   |
| Cutting height adjustable via lever      | 2 ÷ 8 cm                        |
| Weight                                   | 190 Kg                          |

### 25 Stump grinder

|                         |        |
|-------------------------|--------|
| Grinding wheel diameter | 500 mm |
| Teeth                   | 9      |

### 26 Shredder / Woodchipper

|                     |                       |
|---------------------|-----------------------|
| Shredding capacity  | 90 mm                 |
| Shredding rotor     | 8 hammers + 2 blades  |
| Feed hopper opening | 700 × 570 mm          |
| Discharge tube      | 270° swivel           |
| Shredder feeding    | hydraulic feed roller |
| Weight              | 230 Kg                |

### 27 Side hedgecutter

Can be configured to work on left side or right side

|                                    |                               |
|------------------------------------|-------------------------------|
| Cutterbar length                   | 150 cm                        |
| Working angle adjustment           | hydraulic                     |
| Working angle                      | 120°<br>(+15° up; -105° down) |
| Max. cutting height vertical bar   | 407 cm                        |
| Max. cutting height horizontal bar | 412 cm                        |
| Side shift                         | manual, 58 cm                 |
| Max. side reach vertical bar       | 130 cm<br>from machine centre |
| Max. side reach horizontal bar     | 272 cm<br>from machine centre |

### 28 Two-side reach arm hedgecutter

Cuts both sides (right and left) as standard

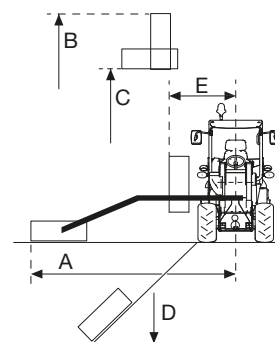
|                                    |                               |
|------------------------------------|-------------------------------|
| Cutterbar length                   | 150 cm                        |
| Adjustments                        | hydraulic                     |
| Working angle                      | 360°                          |
| Max. cutting height vertical bar   | 710 cm                        |
| Max. cutting height horizontal bar | 588 cm                        |
| Max. side reach vertical bar       | 240 cm<br>from machine centre |
| Max. side reach horizontal bar     | 355 cm<br>from machine centre |

### 29 Reach mower

| Head          | Flail mower | Flail mower |
|---------------|-------------|-------------|
| Cutting width | 80 cm       | 100 cm      |
| A             | 320         | 330         |
| B             | 380         | 390         |
| C             | 210         | 210         |
| D             | 170         | 180         |
| E             | 180         | 180         |

### 30 Rotary brush cutter

| Head          | Rotary |
|---------------|--------|
| Cutting width | 130 cm |
| A             | 345    |
| B             | 405    |
| C             | 205    |
| D             | 195    |
| E             | 185    |



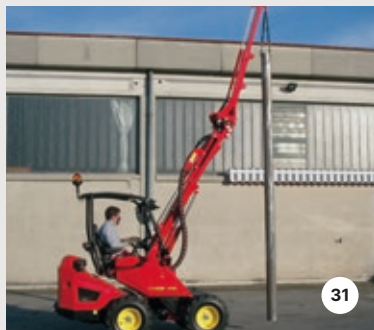
### 31 Telescopic extension boom

|                            |           |
|----------------------------|-----------|
| Minimum length (retracted) | 130 cm    |
| Maximum length (extended)  | 200 cm    |
| Extension                  | hydraulic |
| Weight                     | 70 Kg     |

### 32 Extension boom

|        |        |
|--------|--------|
| Length | 110 cm |
| Weight | 42 Kg  |





## M280

## H440-2s

### Engine

|                    |           |           |
|--------------------|-----------|-----------|
| Manufacturer       | Kubota    | Kubota    |
| Model              | D1305     | V1505     |
| Fuel               | Diesel    | Diesel    |
| Emissions          | Stage V   | Stage V   |
| Cylinders          | 3         | 4         |
| Cylinder capacity  | 1261 cc   | 1498 cc   |
| Power              | 26 HP     | 26 HP     |
| Cooling            | Liquid    | Liquid    |
| Fuel tank capacity | 24 liters | 24 liters |

### Transmission

|                          |   |   |
|--------------------------|---|---|
| Transmission type        | Hydrostatic transmission  | Hydrostatic transmission  |
| Pump                     | piston, Poclairn  | piston, Poclairn  |
| Wheel motors             | orbital type, Danfoss   | orbital type, Poclairn dual speed                                     |
| Pushing force            | 9.300 N   | 10.600 N  |
| Forward speed            | 9.5 km/h  | 8- 16 km/h  |
| Forward - reverse motion | Double pedal operation  | Double pedal operation  |
| Driving wheels           | 4WD   | 4WD   |
| Parking brake            | Hydraulic negative action multi-disc brakes in oil bath on front axle | Hydraulic negative action multi-disc brakes in oil bath on front axle |
| Steering                 | Power steering wheel, articulated chassis                             | Power steering wheel, articulated chassis                             |

### Hydraulic outlets

|                                |                                     |                                     |
|--------------------------------|-------------------------------------|-------------------------------------|
| Front PTO auxiliary hydraulics | 3 flat-face quick-release couplings | 3 flat-face quick-release couplings |
| Front auxiliary hydraulics     | 2 flat-face quick-release couplings | 2 flat-face quick-release couplings |
| Rear auxiliary hydraulics      | 2 flat-face quick-release couplings | 2 flat-face quick-release couplings |

### Lifting boom

|                                      |        |        |
|--------------------------------------|--------|--------|
| Telescopic arm Sfilo telescopico     | 70 cm  | 70 cm  |
| Maximum lifting height (at pin)      | 308 cm | 308 cm |
| Maximum overhang (at mounting plate) | 120 cm | 120 cm |
| Self-levelling                       | ●      | ●      |

### Electrical system

|  |   |   |
|--|---|---|
| Battery                                  | 12 V/ 70 Ah<br>battery master switch as standard                          | 12 V/ 70 Ah<br>battery master switch as standard                          |
| Alternator                               | 40 A ( 60 A cab version)  | 40 A ( 60 A cab version)  |
| Electrical outlet                        | 12 V CC on the lifting boom   | 12 V CC on the lifting boom   |
| Optional without cab / Standard with cab | Front and rear work lights, road headlights complete with rotating beacon | Front and rear work lights, road headlights complete with rotating beacon |



## M280

## H440-2s

### Safety devices

|                         |   |   |
|-------------------------|---|---|
| Load anti-spill device  | ●   | ●   |
| Machine anti-tip device | ●   | ●   |
| FOPS                    | ●   | ●   |
| ROPS                    | 4-post, rigid, with transparent polycarbonate visor | 4-post, rigid, with transparent polycarbonate visor |

### Dimensions and weight

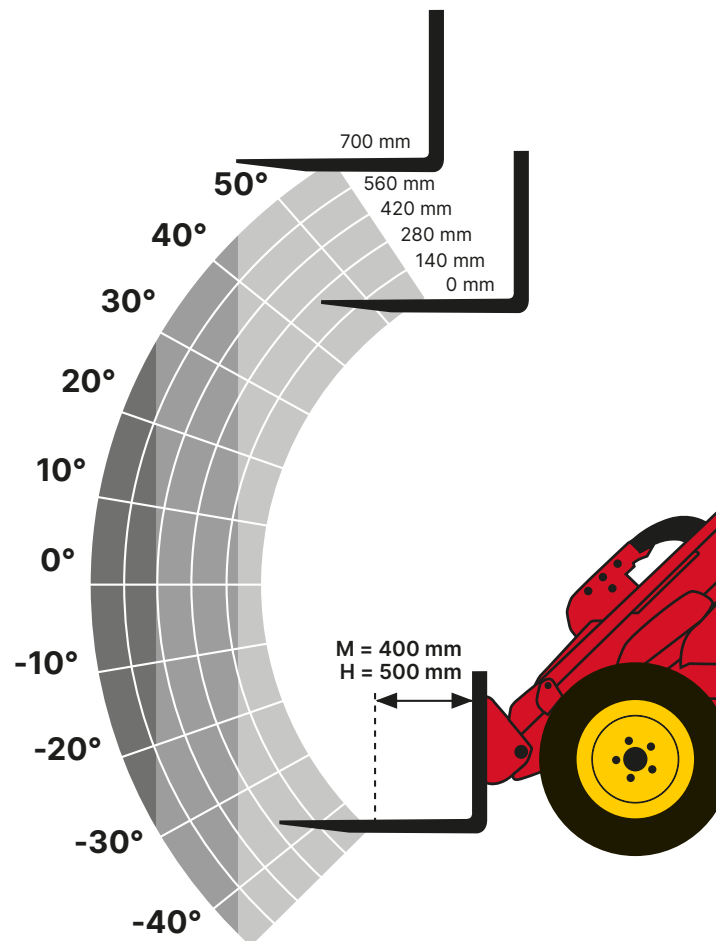
|   |                    |                    |
|---|--------------------|--------------------|
| Standard industrial type wheels (Optional Garden/Agricultural type and anti-puncture filling) | 26 × 12.00- 12     | 26 × 12.00- 12     |
| Length / Width / Height with ROPS   | 267 × 128 × 210 cm | 253 × 128 × 210 cm |
| Length / Width / Height with CAB  | 267 × 128 × 219 cm | 253 × 128 × 219 cm |
| Weight (without equipment) with ROPS  | 1490 Kg            | 1710 Kg            |
| Weight (without equipment) with CAB   | 1620 Kg            | 1860 Kg            |

\*\* for the operative load capacity refer to the load diagram

|         |        |        |        |
|---------|--------|--------|--------|
|         |        |        |        |
| SERIE M | 120 Kg | 250 Kg | 410 Kg |
| SERIE H | 180 Kg | 300 Kg | 480 Kg |

With ballasts, solid wheels and cab

|         |        |        |        |
|---------|--------|--------|--------|
|         |        |        |        |
| SERIE M | 250 Kg | 430 Kg | 710 Kg |
| SERIE H | 400 Kg | 600 Kg | 900 Kg |





[gianniferrari.com](http://gianniferrari.com)

